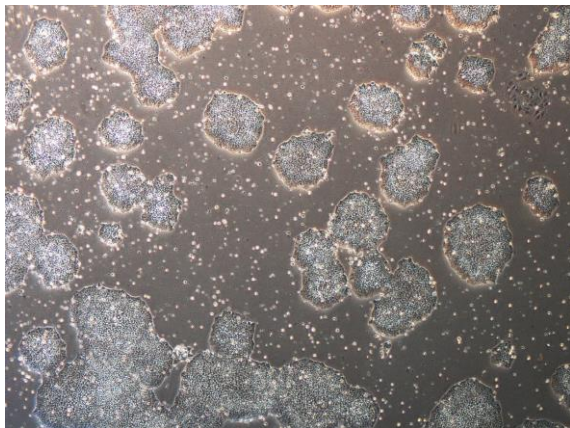
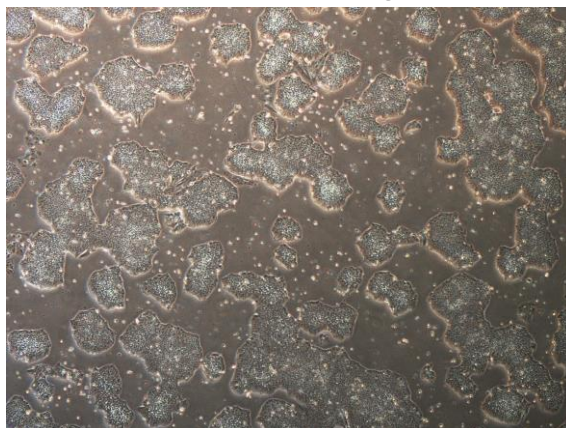


【 cira-jk-0012 】 Morphology of iPSC colonies

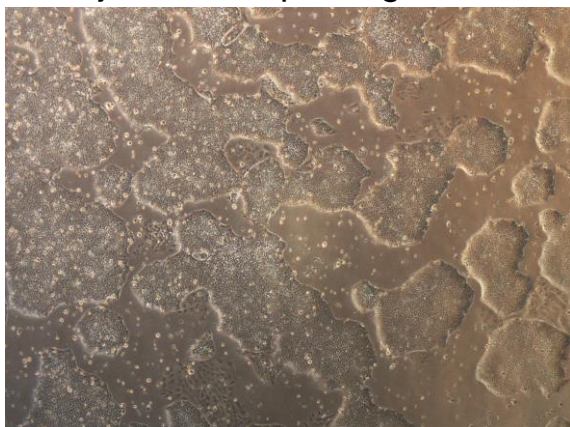
cira-jk-0012-A: passage-2



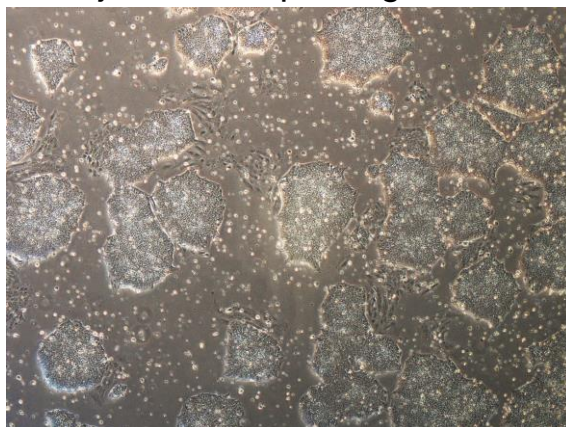
cira-jk-0012-B: passage-2



cira-jk-0012-C: passage-2



cira-jk-0012-D: passage-2



cira-jk-0012-E: passage-2



cira-jk-0012-F: passage-2



(All images were captured at 4x magnification)